

Hilltop Farms

December 18, 2009

To: Hilltop Farms Homeowners
From: Continuing Care Management

RE: Trash Removal/Recycling Services

In an effort to save the Hilltop Farms Condominium Association money in its trash/recycling removal services, the Board has engaged E.L Harvey and Sons as the new trash removal vendor effective January 22, 2010. Therefore please put your trash out as usual January 15, 2010 and the current trash vendor will remove the old bin. On the same day, January 15, 2010, E. L Harvey will deliver all units a new trash bin for your use.

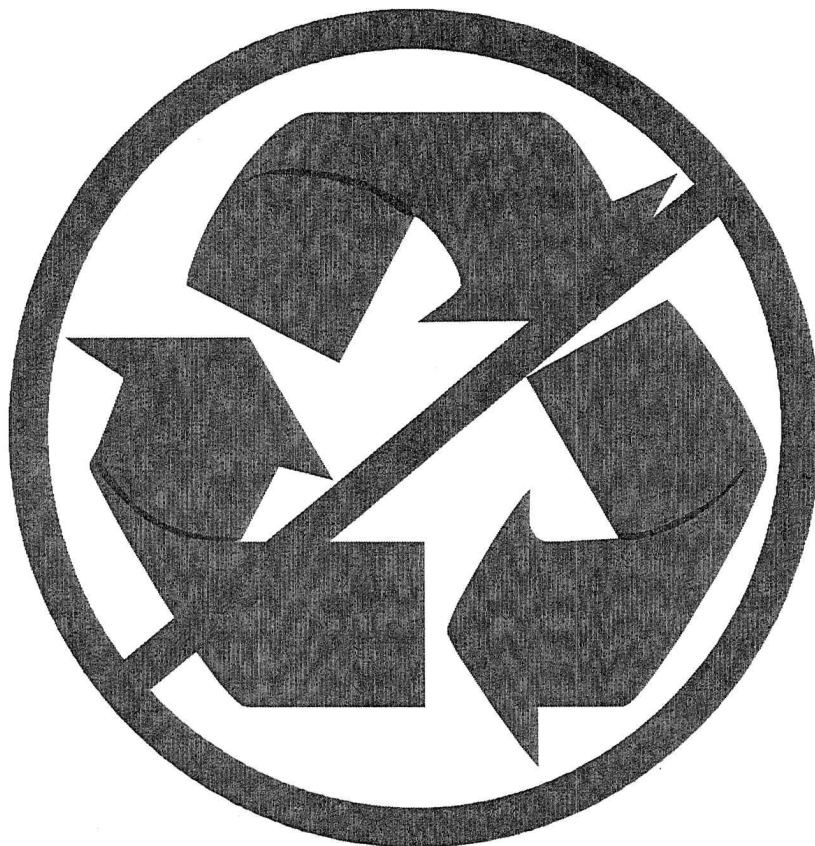
E. L Harvey will be providing the same service as our previous vendor. However, many of the homeowners were interested in having a recycling program implemented but the cost associated with this service prohibited the move.

For those who would like to recycle their household products, we would suggest that you put the recyclable materials into clear plastic bags and place in trash bin. This will allow the Material Recovery Facility the ability to actually SEE what is in the bags and pull it from the main waste stream.

Mixed Fibers can be placed in one bag and co-mingles (cans, bottles, plastic, aluminum) in another bag. I have attached flyers in an effort to educate everyone on what can, and can't be recycled.

Thank you again for your cooperation.

CONTAMINANTS



*The following list of CONTAMINANTS are
NOT ACCEPTABLE for recycling:*

BLUEPRINTS
CANDY WRAPPERS
CARBON PAPER
FLOPPY DISKS
GREY CARTONS
LUNCH BAGS

COPY PAPER REAM WRAPPERS
OVERHEAD TRANSPARENCIES
STYROFOAM & PLASTIC
3-RING BINDERS
NAPKINS & CUPS
MICRO FILM

WHEN IN DOUBT, LEAVE IT OUT!

 **harvey**

Commingle Recycling Program



Materials Acceptable for Recycling:

**PLASTIC FOOD &
BEVERAGE CONTAINERS
#1 THROUGH #7 - NO FOAM**

ALUMINUM & TIN CANS

CLEAR & COLORED GLASS

*Please empty and rinse before recycling.
Plastic and metal caps preferred removed, but acceptable.
When in doubt, leave it out!*



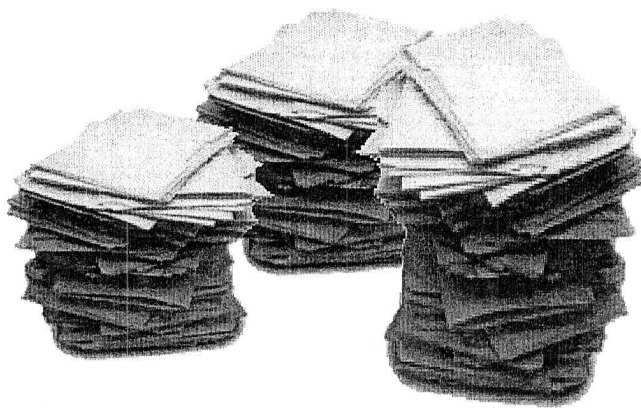
harvey
Environmentalists Every Day

E. L. Harvey & Sons, Inc.

68 Hopkinton Road, Westborough, MA 01581

Telephone: 508-836-3000 or 800-321-3002 • Recycling • Waste Removal • Shredding

Mixed Fiber Recycling Program



Materials Acceptable for Recycling:

- **Accounting Ledgers**
- **Brochures**
(coated or uncoated; stapled or folded)
- **Carbonless Forms**
(NCR Paper)
- **Computer Paper**
(green, blue-bar, plain, laser or inkjet)
- **Copier Paper**
(white or colored)
- **Corrugated Boxes**
- **Envelopes**
(white or colored; with or without windows)
- **Loose-leaf and Filler Paper**
(white or colored)
- **Magazines**
- **Manila File Folders**
(NO plastic or metal tabs)
- **Newspaper**
- **Pamphlets**
(coated or uncoated; stapled or folded)
- **Stationery**
(white or colored)

• *Wrappers from reams of copy paper are not allowed.
When in doubt, leave it out!*



E. L. Harvey & Sons, Inc.
68 Hopkinton Road, Westborough, MA 01581

Telephone: 508-836-3000 or 800-321-3002 • Recycling • Waste Removal • Shredding